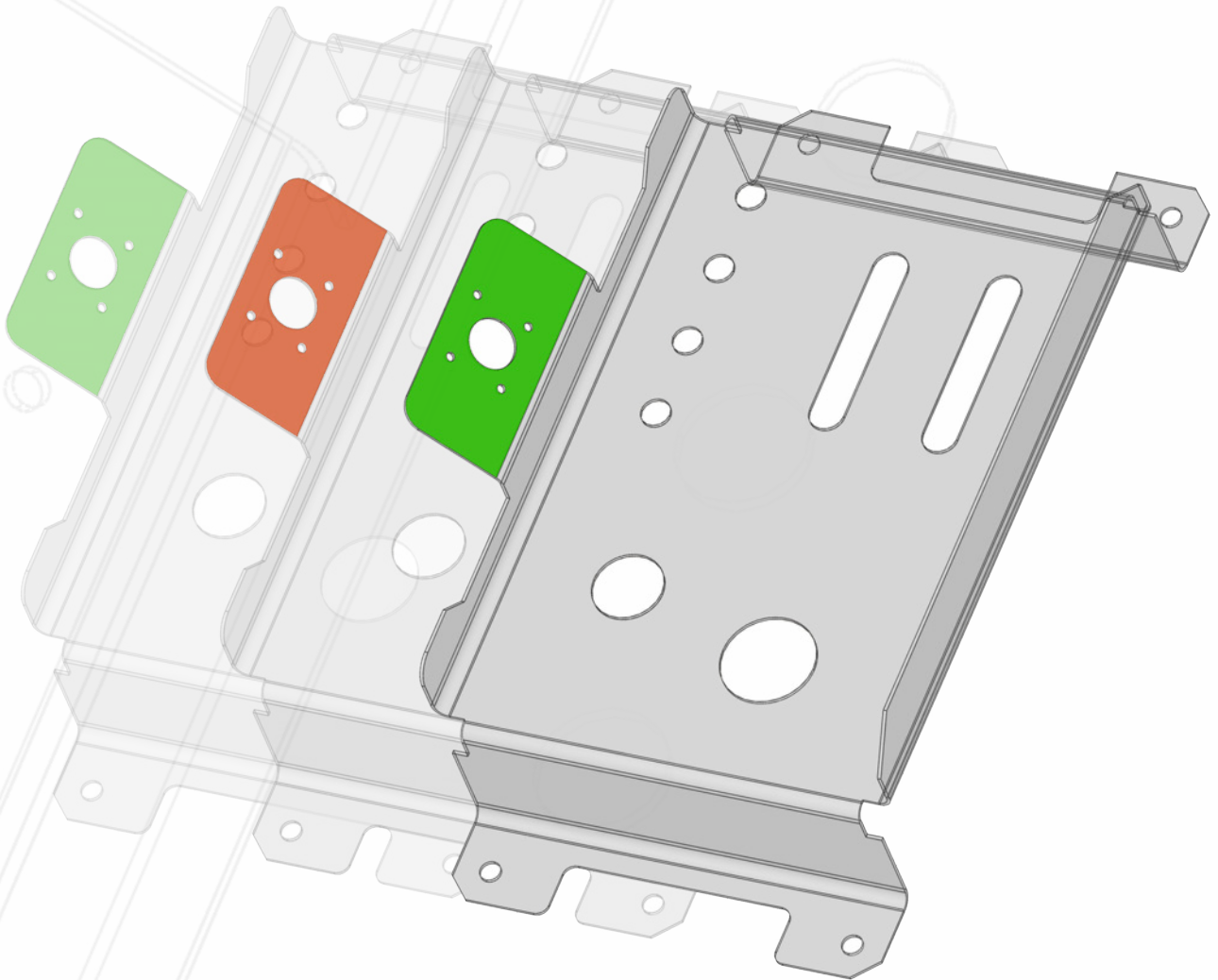


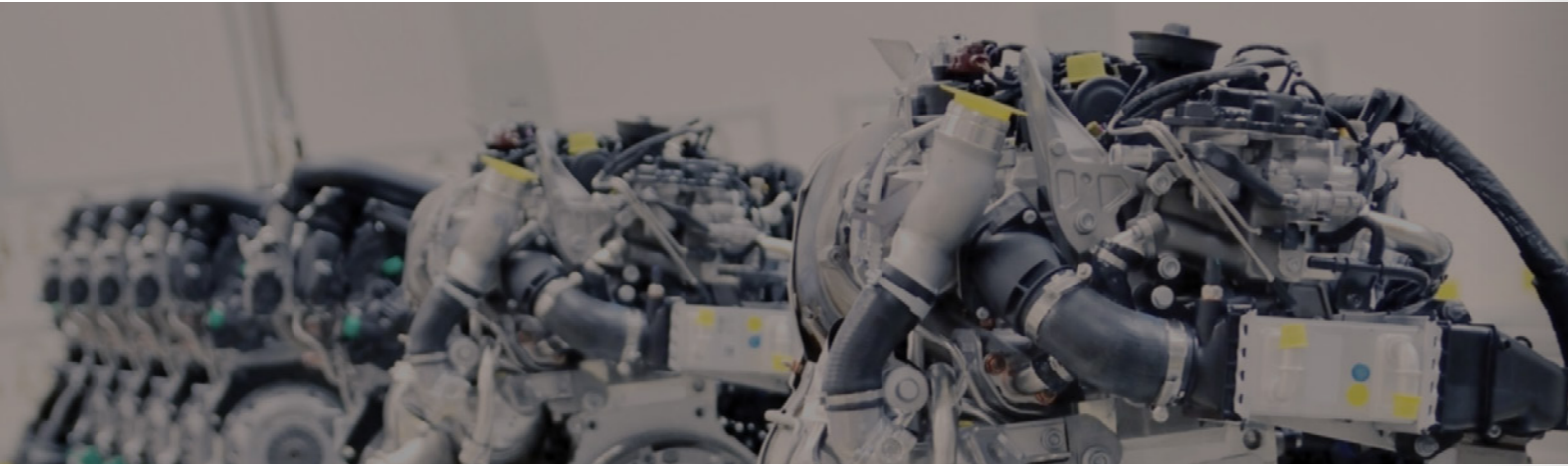


EVOLVE SPC



EVOLVE Suite Model-Based Family of Software



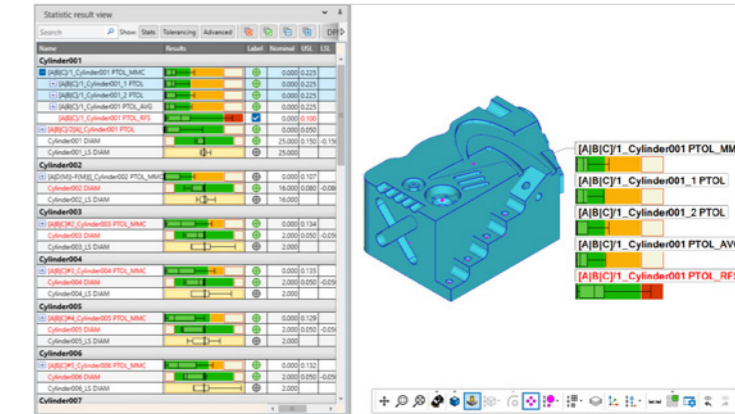


Statistical Process Control

3D CAD Model Based

Statistical information is presented in interactive charts and feature characteristics are easily connected to the CAD model to clearly identify them.

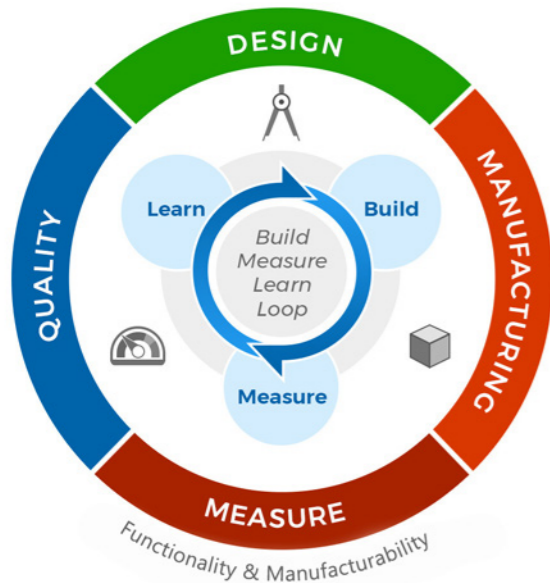
Analyze your data on I-MR, Xbar-R or Xbar-S charts or use one of twenty available customizable charts.



EVOLVE Suite

The EVOLVE software suite from KOTEM optimizes design, production and inspection processes enabling manufacturers to shorten product design & development time, improve quality, and reduce costs through improved efficiency.

With its fully automatic GD&T evaluation of design tolerances, an annotated digital three-dimensional (3D) model of a product serves as the authoritative information source throughout a product's lifecycle in a Model Based Enterprise (MBE).



EVOLVE SPC

KOTEM EVOLVE SPC is a **full statistical process control software** solution that can be used as a standalone product with existing measuring systems or integrated part of the EVOLVE Suite.

Statistics about every measured feature are visualized interactively in the 3D CAD model or in tables and graphs, making it easy to **visualize process variations by characteristic**.

Legacy measurement data can be converted to model-based data using a simple wizard.



Real Time Process Control

Monitor one or more measuring systems, providing **real-time updates** and **tracking of the current manufacturing state**.

Gives immediate **visual feedback** to the operator of any **project rule violation**.

Basic and Advanced Reporting

Create and customize detailed reports with an easy to use drag and drop report generator or take advantage of our one-click predefined Excel and PDF reports.

Build company-branded Excel report templates for your company's statistical reporting.

Statistic results

| Name | ndc | EV | AV | PV | TV | RR | %RR |
|------------------|----------|---------|----|---------|---------|---------|----------|
| Cylinder001 | | | | | | | |
| Cylinder001 DIAM | 5.96083 | 0.00047 | | 0.00199 | 0.00205 | 0.00047 | 2.43417 |
| Cylinder002 | | | | | | | |
| Cylinder002 DIAM | 19.24197 | 0.00018 | | 0.00241 | 0.00242 | 0.00018 | 0.91281 |
| Cylinder003 | | | | | | | |
| Cylinder003 DIAM | 15.05894 | 0.00030 | | 0.00315 | 0.00316 | 0.00030 | 1.52136 |
| Cylinder011 | | | | | | | |
| Cylinder011 DIAM | 2.24563 | 0.00112 | | 0.00178 | 0.00211 | 0.00112 | 7.22644 |
| Cylinder011 PTOL | 17.16395 | 0.00549 | | 0.06669 | 0.06691 | 0.00549 | 5.65944 |
| Cylinder012 | | | | | | | |
| Cylinder012 DIAM | 1.94309 | 0.00183 | | 0.00252 | 0.00311 | 0.00183 | 36.20112 |
| Datum A | | | | | | | |
| Datum A PERP | 1.57668 | 0.00922 | | 0.01028 | 0.01380 | 0.00922 | 36.51252 |



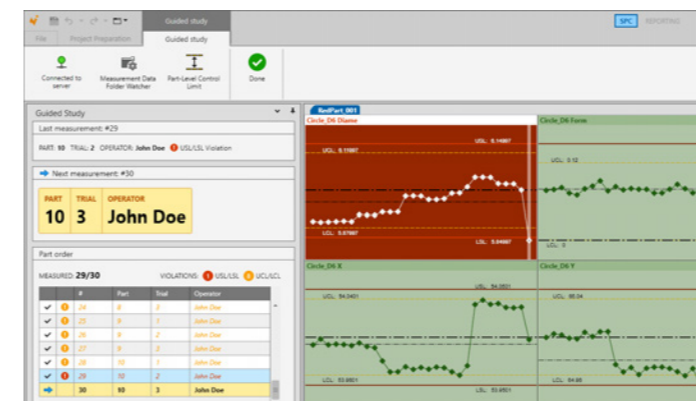
EVOLVE Design helps designers apply and verify GD&T (GPS) specifications by proofing the callouts and providing guidance directly from the standards.



EVOLVE Manufacturing identifies systematic problems with manufactured parts and recommends solutions to minimize future manufacturing errors.



EVOLVE SmartProfile provides guidance for adding or modifying part design tolerances. It combines measurement data with the CAD model of the part and automatically runs GD&T (ASME) and GPS (ISO) evaluations.



EVOLVE SPC Benefits

- Being model-based, it is easy to visualize the part and its associated measurement results
- Easy to manage your data with a full database to support **data trends** and **long-term analysis**
- Supports **data collection from multiple measurement systems** simultaneously
- Visualize **statistical trends** of positional tolerances in 3D space
- Apply the suggested **ReTolerance** and **ReTarget** values to correct a process
- Perform **Gage R&R studies**



KOTEM The leader in dimensional analysis software

KOTEM is the worldwide leading developer of software for dimensional analysis. The EVOLVE suite of advanced GD&T and fitting software helps manufacturers integrate quality inspection data with their manufacturing and design workflows. KOTEM is a Quality Vision International company.

QVI® (Quality Vision International) is the world's largest vision metrology company. Founded in 1945, QVI is the world leader in the application of optical, electronic and software technologies into vision and multisensor measuring systems for manufacturing quality control. To learn more about the EVOLVE suite of software solutions, go to:

www.kotem.com/evolve-suite

EVOLVE is fully compliant with all internationally accepted GD&T Standards:



ISO 1101



ASME Y14.5M-1994



ASME Y14.5-2009



ASME Y14.5-2018

EVOLVE Suite

Check out the other members of our model based family of software:



EVOLVE Design helps designers apply and verify GD&T (GPS) specifications by proofing the callouts and providing guidance directly from the standards.



EVOLVE Manufacturing identifies systematic problems with manufactured parts and recommends solutions to minimize future manufacturing errors.



EVOLVE SmartProfile provides guidance for adding or modifying part design tolerances. It combines measurement data with the CAD model of the part and automatically runs GD&T (ASME) and GPS (ISO) evaluations.