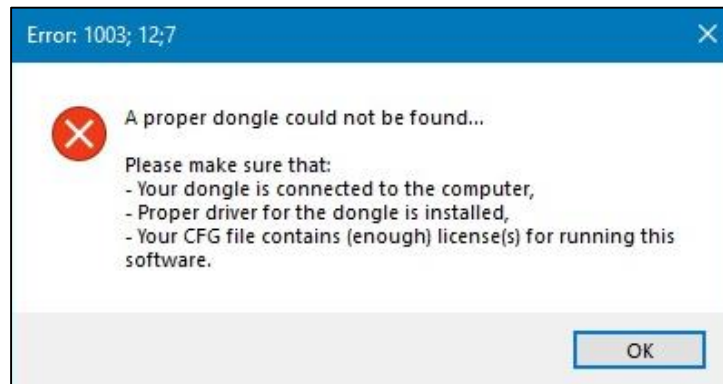
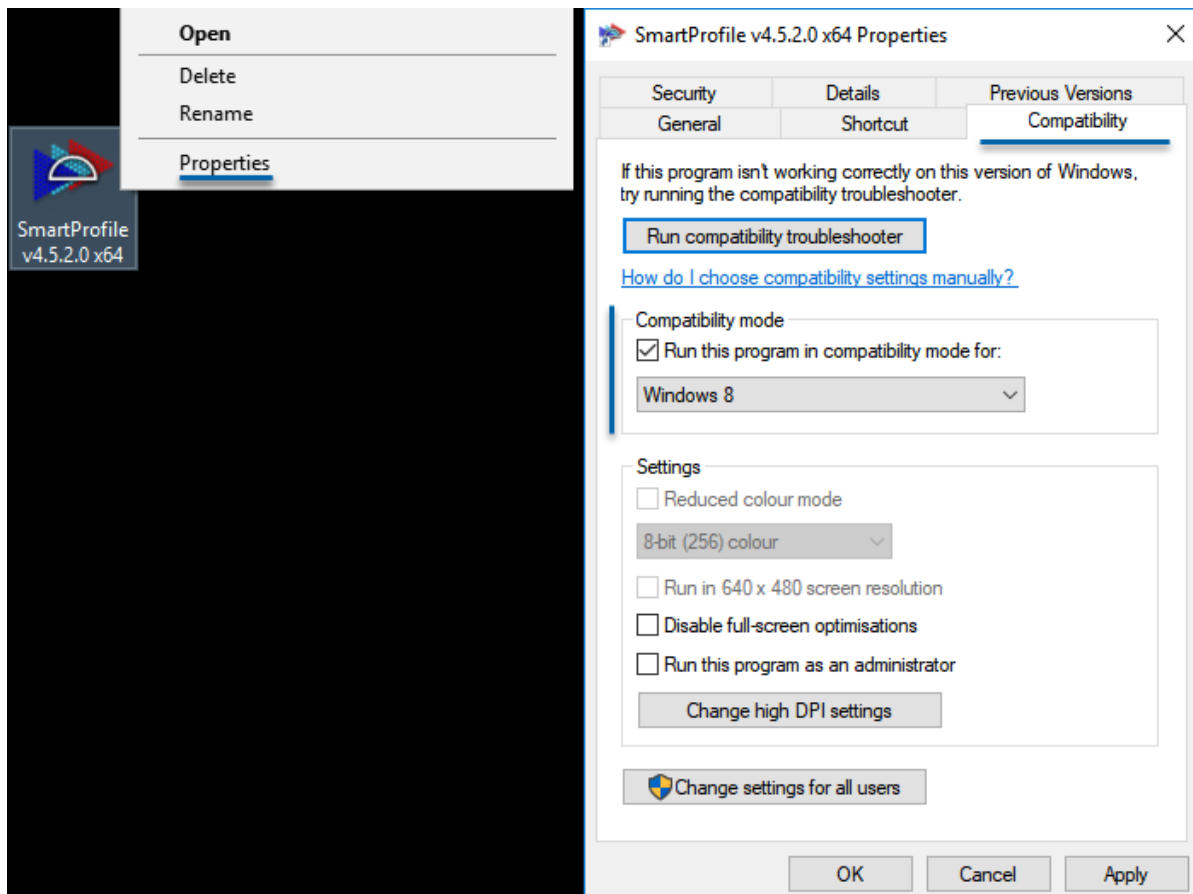


Fix for SmartProfile launching error on Windows 10, (caused by update 1803)

At the end of April Microsoft officially released the 1803 update, which had negative effects on several applications and services. This update has also effected the licensing service of KOTEM EVOLVE products; the following error is encountered with the dongles:



Hopefully, this error will be fixed by the next windows update. Till then a workaround helps to run our applications smoothly: **Setting the *compatibility mode* to Windows 8 at the shortcuts fixes the licensing issues:**



This setting is available in *Compatibility* tab of the shortcut's properties.